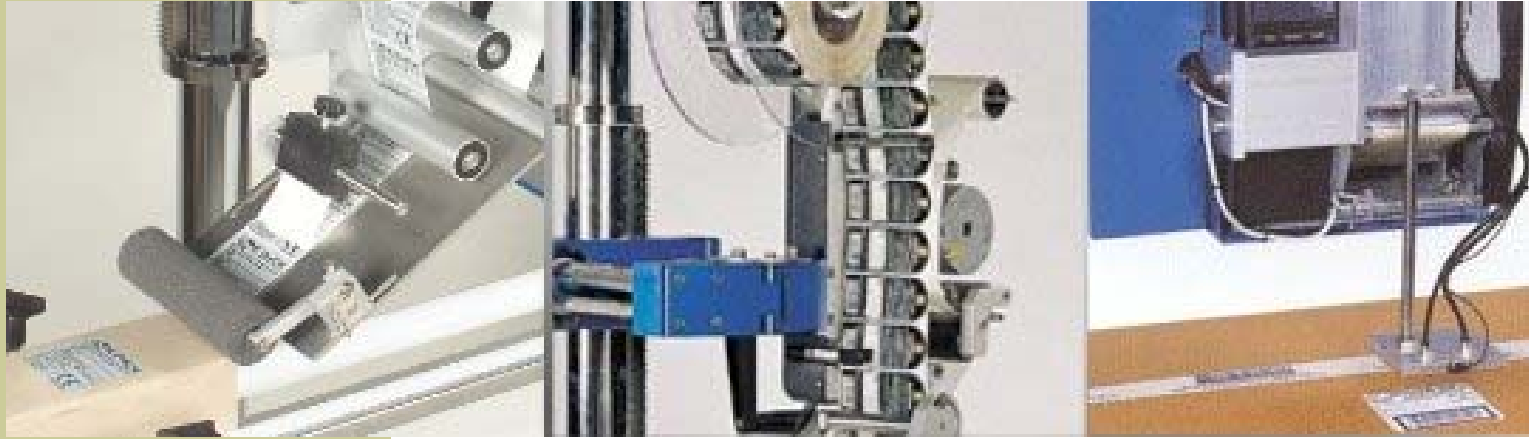


Model : 3DPA series

Automatic Print & Apply Applicators



Our range of Print & Apply systems are suitable for labelling on to flat or slightly irregular products on packing lines. All systems are simple to set-up and operate. Labels designed and uploaded using a standard PC Ideal for end-of-line with taping machines, box moulding-machines or output of shrink-wrap units.

Two main types available: 'Wipe-on' or Pneumatic

Technical Data (with TEC 472 printer):

- Printing definition - 200 dpi or 300dpi
- Max printing width - 104 millimeters (TEC 472)
- Max printing width - 127 millimeters (TEC 572)
- Max spool Internal diameter - 45 millimeters
- Max spool External diameter - 180 millimeters
- Internal rewriter for backing paper
- Connection with parallel port or RS232
- Printing- thermal conveyance or direct thermal
- Max velocity - 12/15 meters per minute (depending on the printer used and its velocity)
- Application made by a film unrolling blade
- Wipe-on roller
- Product detected by photocell

Optional

- * Optical/acoustic alarm for finished label or finished tape
- * Standard software
- * Mounting stand
- * Auto-locking wheels
- * Ribbon save

| Model | Type | Operating Speed (m/s) | Print Resolution (DPI) | Label Width (mm) |
|-----------|-----------|-----------------------|------------------------|------------------|
| 3DPASX4 | Wipe-on | 4.6, 9.1 & 15.2 | 200 | 50 to 104 |
| 3DPASX5 | Wipe-on | 4.6, 9.1 & 15.2 | 200 | 50 to 127 |
| 3DPAZ4M-2 | Wipe-on | 4.6, 9.1 & 15.2 | 200 | 50 to 104 |
| 3DPAZ4M-3 | Wipe-on | 4.6, 9.1 & 15.2 | 300 | 50 to 104 |
| 3DPASX4-P | Pneumatic | 4.6, 9.1 & 15.2 | 200 | 50 to 104 |
| 3DPASX5-P | Pneumatic | 4.6, 9.1 & 15.2 | 300 | 50 to 127 |